

An aerial photograph of a large container ship docked at a port. The ship is filled with colorful shipping containers. In the background, there are green mountains and a city skyline. The water is a deep blue-green. The port area is filled with stacks of containers and several large blue cranes. A small tugboat is visible near the ship's bow.

AMBREY ▾

Strengthening Maritime Security
13 Nov 25

SERVICE CAPABILITY



Risk Analytics

Proactive analysis and intelligence linking the global shipping fleets. Our innovative solutions have also enabled us to detect events and predict where events are more likely to occur.



Offshore Capability

Our presence offshore – guards, escort vessels, oil and gas infrastructure support – means we have on the water domain expertise across all the geographies we operate shared with members.



Response

Global and proven capability to respond to maritime risks, improve safety and support crews in high-risk environments worldwide. Plus mobilise & support in response to casualty incidents.



Marine Insurance

We back our understanding of marine risk & have our own MGA placing hull war risk underwritten by a panel of Lloyd's syndicates from American, British German & Japanese capacity providers



Global Operations Centre

24x7 Analysts & Maritime Operations Officers providing real-time analysis, intelligence, routing and protective measure advice to the global shipping fleet.

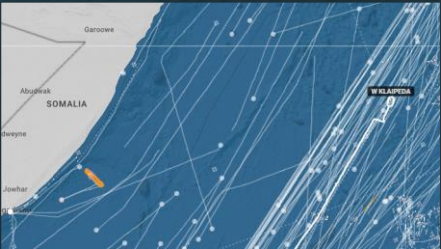
GLOBAL OPERATIONS CENTER

Enhancing Situational Awareness



Networking

15,000+ merchant vessels are registered with Ambrey's GOC, seafarers report and assist with verifying incidents



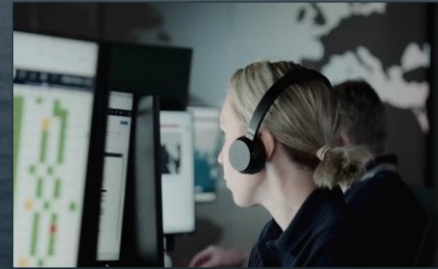
Ship-based tracking

AIS and satellite communications systems enable high-confidence location tracking and anomaly detection



Satellite-based monitoring

Mariners and Analysts combine to task high-resolution imagery within hours



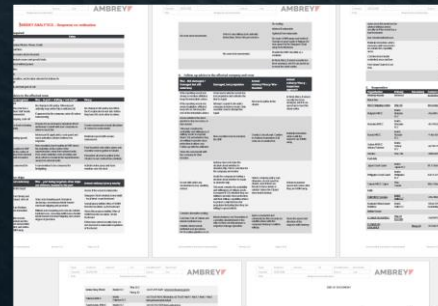
Receiving reports and sharing advice

11 Maritime Operations Officers, all at least former OOW, speak directly with those at sea, gather information, and provide advice.



Interpreting

7 graduate and post-graduate Duty Analysts, receive and verify reports and publish events. They are supported by 5 regional/thematic analysts, a geospatial analyst, and a statistician.



Advice and support

Certified ISO 27001 information security management and proven effectiveness. Delivery through e-mail and ECDIS.

SOUNION – A Complex Salvage Operation within a War Zone



MARLIN LUANDA – Missile Attack requires bravery beyond the line of duty



ALPINE PENELOPE – Crisis response and recovery of 9 kidnapped crew



ETERNITY C – Search and Rescue



PEMBA, MOZAMBIQUE – ISIS attack and evacuation



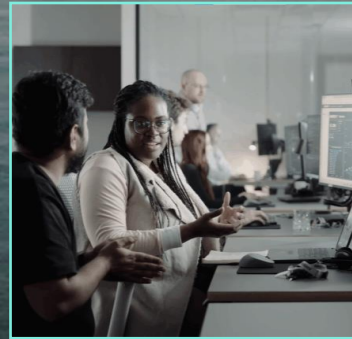
GLOBAL RESPONSE

WAY FORWARD:

Strengthening Partnerships for Long-Term Sustainability



Establishment
of Equipment
Depots



Joint Exercises
to enhance
seafarer/
maritime
safety



Pollution
Preparedness
and Response



Emergency
Response
Support



Maritime
Domain
Awareness



Long – Term
Sustainability