



SKYLIGHT

A product of  Ai2

We will start in a
few minutes



SKYLIGHT

A product of Ai2

Dar-es-Salaam, 28th November 2024

Remarks from Skylight DCoC/JA High-Level Meeting

Théo Girard

Regional Partnership Manager for the Gulf of Guinea
and the Indian Ocean @ Skylight





What is Skylight?

Founded by the Allen Institute for Artificial Intelligence (AI2), Skylight is a **non-profit programme** providing **groundbreaking technology** to government agencies to support maritime domain awareness and provide actionable intelligence for protecting our oceans.

We strive to build the world's most advanced technology for data analysis of maritime activity.





Common Skylight Operational Use Cases



Surveillance of Exclusive Economic Zones (EEZ)



Regional Enforcement Operations



Protection of Marine Protected Areas (MPA)



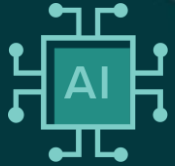
National Fleet Management



Application of Port State Measures Agreement (PSMA)



How Skylight Works



Leveraging **AI technology** to provide 24/7 monitoring of maritime activity worldwide.

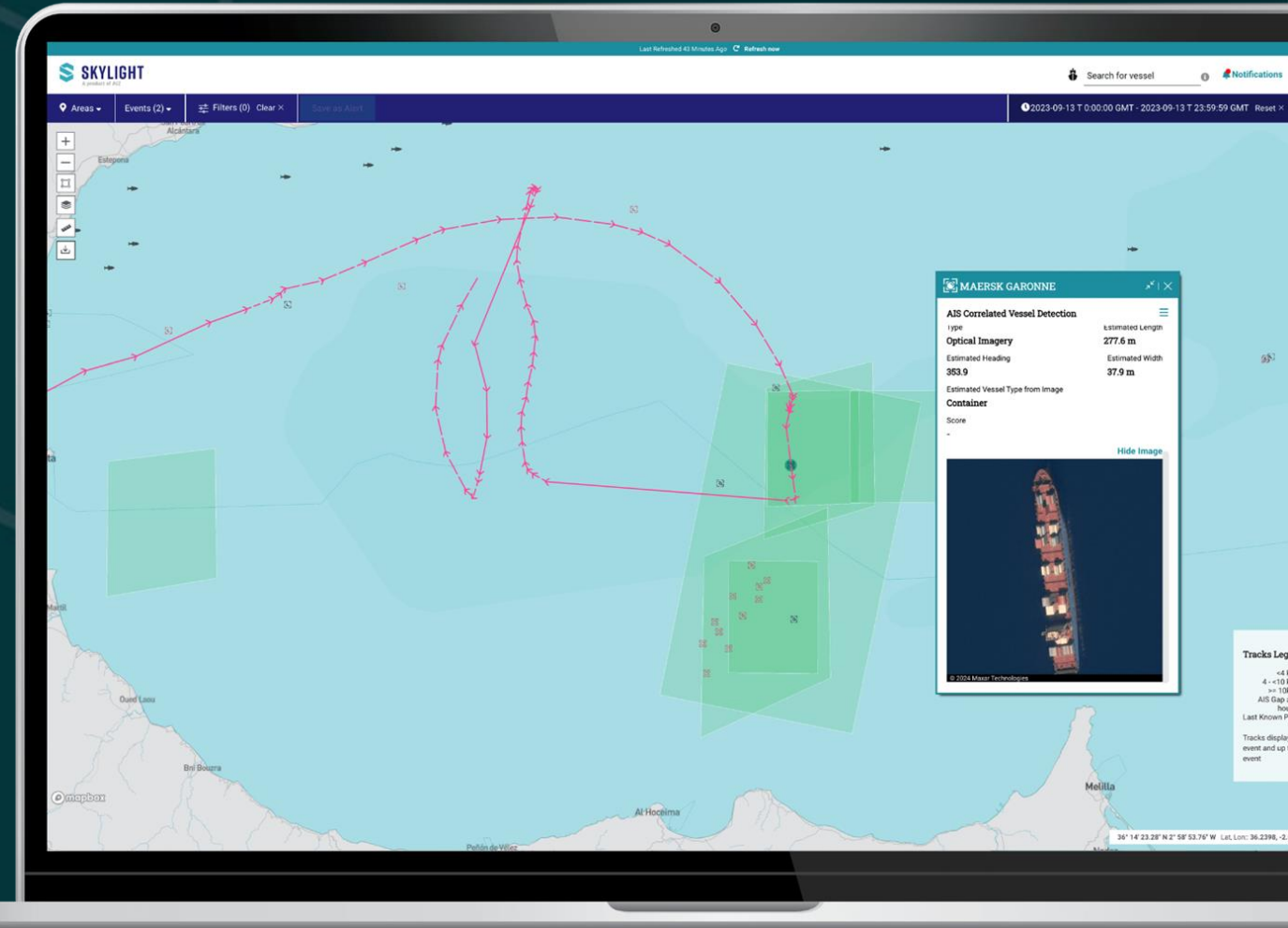


Emphasis on **real-time to near real-time intelligence** for immediate action.



Offered at no cost to all agencies sharing our mission.

Skylight helps make better and faster decisions.

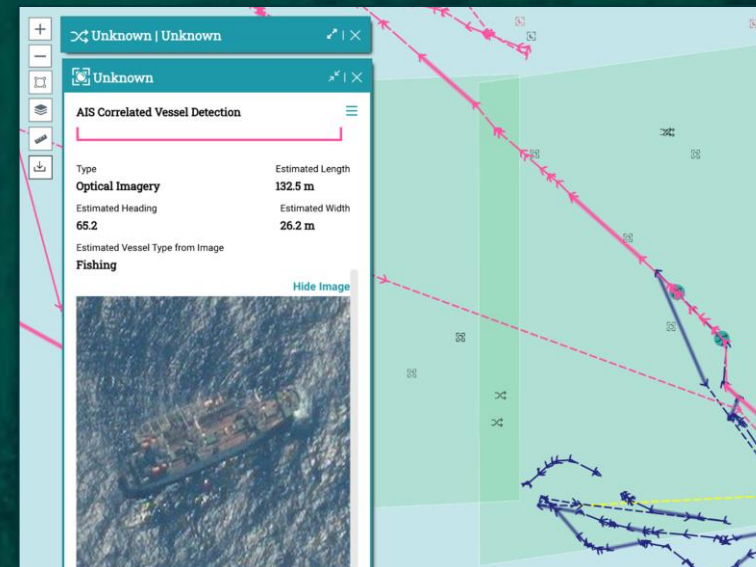
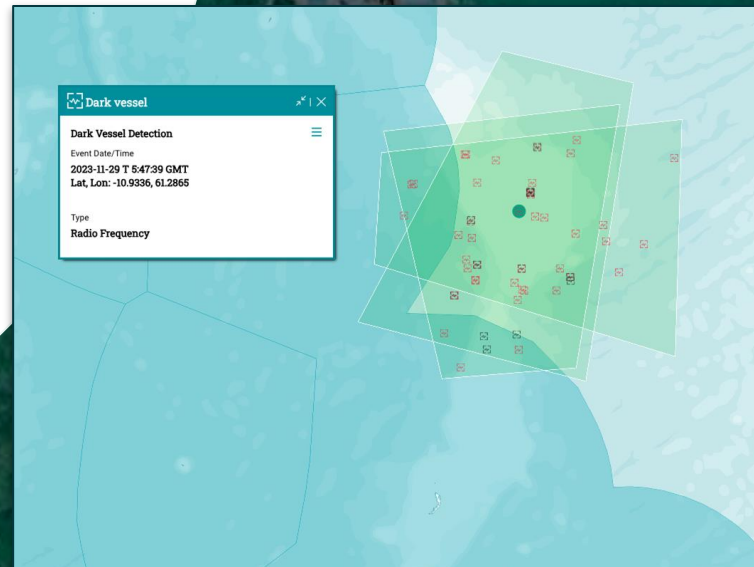
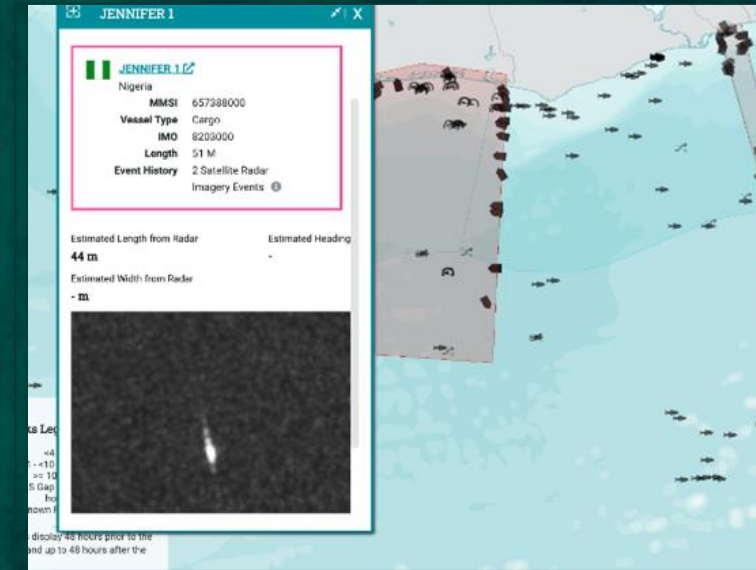
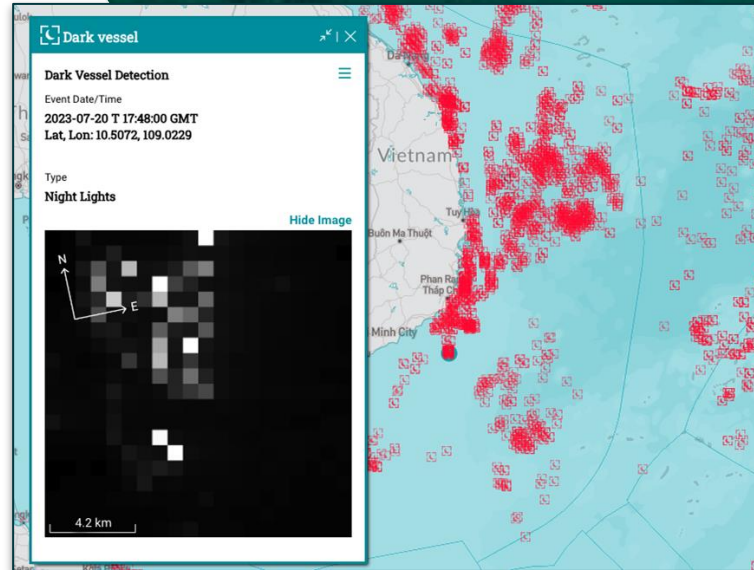




Satellite Detections

Skylight shifts through extensive collections of satellite imagery to identify vessels of varying sizes, correlating them with AIS data and highlighting those vessels not broadcasting their position (“dark” vessels).

We process public satellite imagery for vessels globally faster than anyone else in the world.





Real-time Monitoring of Vessel Behaviours


Skylight analyzes 100 million AIS messages every day to provide a comprehensive real-time overview of maritime activity across the world.

We are the only AI technology able to surface maritime activity on AIS within minutes of it happening.

GUAN WANG NO.21 | CHEN YU NO.7


Standard Rendezvous

Event Date/Time
2024-11-06 T 12:43:40 UTC
Lat, Lon: -8.9177, 64.7934

 [GUAN WANG NO.21](#)
Taiwan

MMSI	416002499
Vessel Type	Cargo
IMO	-
Length	29 M




Event History
1 Standard Rendezvous Event With CHEN YU NO.7

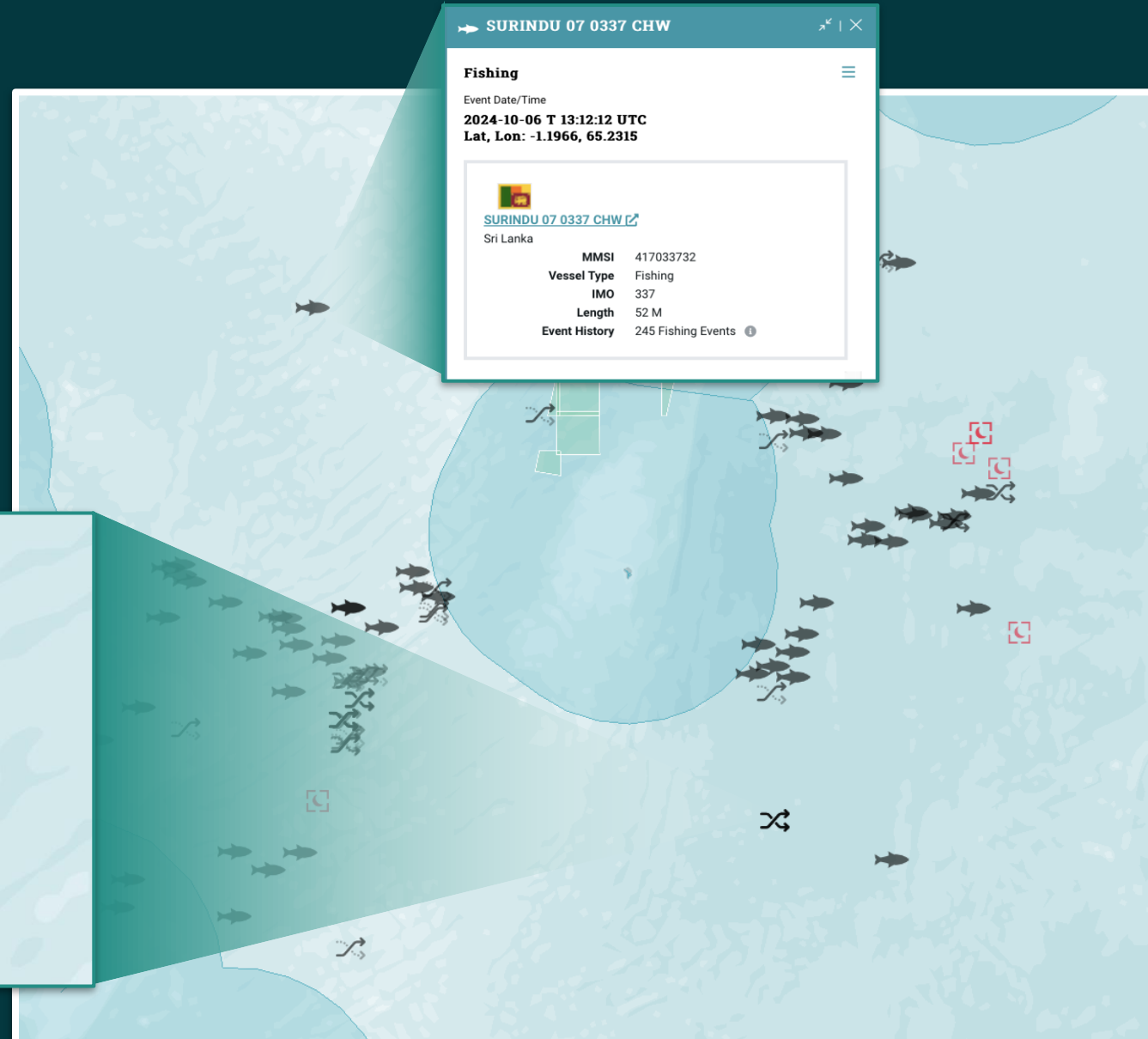
 [CHEN YU NO.7](#)
Taiwan

MMSI	416308000
Vessel Type	Fishing
IMO	7503775
Length	83 M

Duration
1h 4m

Share Feedback



Standard Rendez-Vous

IMULA 1749 MTR | IMULA 1861 MTR

Standard Rendezvous

Event Date/Time
2024-11-07 T 3:51:06 UTC
Lat, Lon: 1.9938, 77.2532

IMULA 1749 MTR
Sri Lanka
MMSI 417174941
Vessel Type Fishing
IMO -
Length 14 M

IMULA 1861 MTR
Sri Lanka
MMSI 417186141
Vessel Type Fishing
IMO 20190904
Length 16 M

Event History
1 Standard Rendezvous Event With IMULA 1861 MTR

Duration
30m

Share Feedback

Fishing

SHIN SHUEN FAR

Fishing

Event Date/Time
2024-11-07 T 13:02:54 UTC
Lat, Lon: -7.4805, 56.3489

SHIN SHUEN FAR
Taiwan
MMSI 416002839
Vessel Type Fishing
IMO 8782458
Length 32 M

Event History
439 Fishing Events

Share Feedback

Comments

Dark Rendez-Vous

LUCKY GATE

Dark Rendezvous

Event Date/Time
2024-11-08 T 1:56:10 UTC
Lat, Lon: 14.4195, 53.0587

LUCKY GATE
Saint Kitts and Nevis
MMSI 341384001
Vessel Type Cargo
IMO 9143714
Length 158 M

Event History
8 Dark Rendezvous Events

Vessel(s) in the Vicinity

TURACO
Panama
MMSI 352002942
Vessel Type Tanker
IMO -
Length -

Duration
46m

Share Feedback

Entry in an Area of Interest

AMU 2

Entry

Event Date/Time
2024-11-06 T 16:54:45 UTC
Lat, Lon: -6.3841, 39.3159

AMU 2
Palau
MMSI 511101235
Vessel Type Cargo
IMO 9983293
Length 79 M

Event History
10 Entry Events In Your Areas

Exit Date/Time
2024-11-06 T 21:20:47 UTC

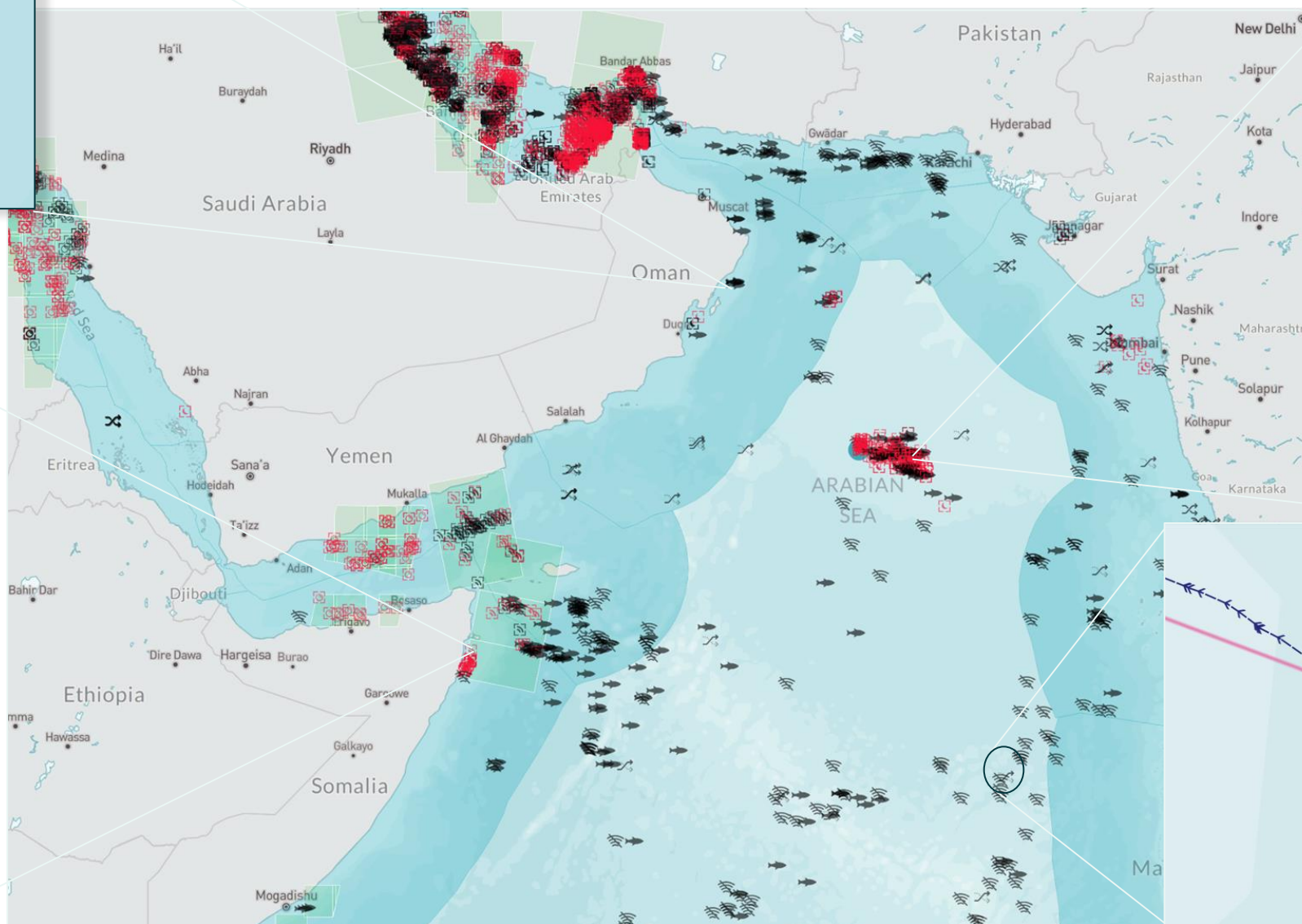
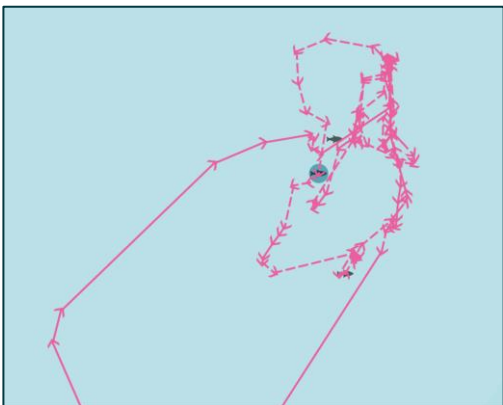
Duration in Area
4h 26m

Area
Tanzanian Ports

Share Feedback



Skylight User Interface



Dark vessel

Dark Vessel Detection

Event Date/Time
2023-10-06 T 2:20:13 GMT
Lat, Lon: 9.5963, 51.0433

Type
Satellite Radar

Hide Image

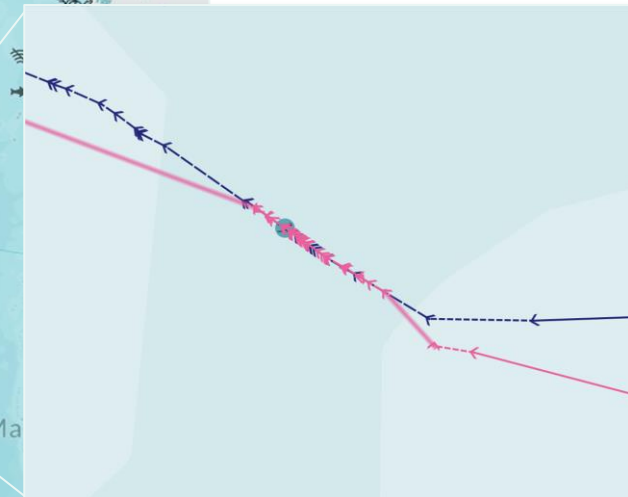
Dark vessel

Dark Vessel Detection

Event Date/Time
2023-10-05 T 21:12:00 GMT
Lat, Lon: 16.3390, 64.8503

Type
Night Lights (Beta)

Hide Image



Our partners in the Eastern Indian Ocean region

+30 government agencies using Skylight in the Western Indian Ocean (WIO) Region alone.



Contacts

Théo Girard

Regional Manager for the Gulf of Guinea
and the Indian Ocean

Skylight / AI2

Email: theog@allenai.org

WhatsApp: +33 6 49 609 853

<https://www.skylight.global/>



SKYLIGHT

A product of  AI2

